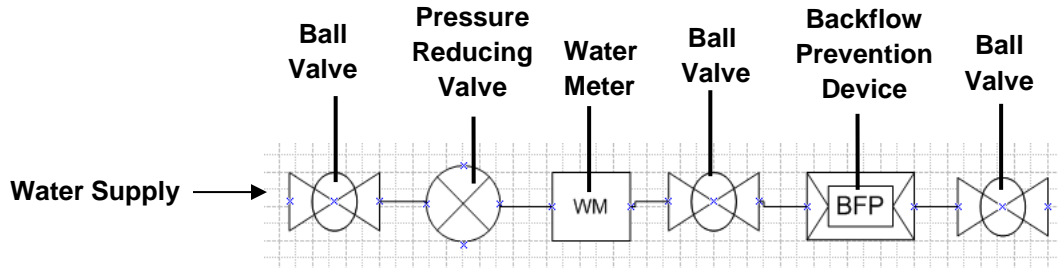
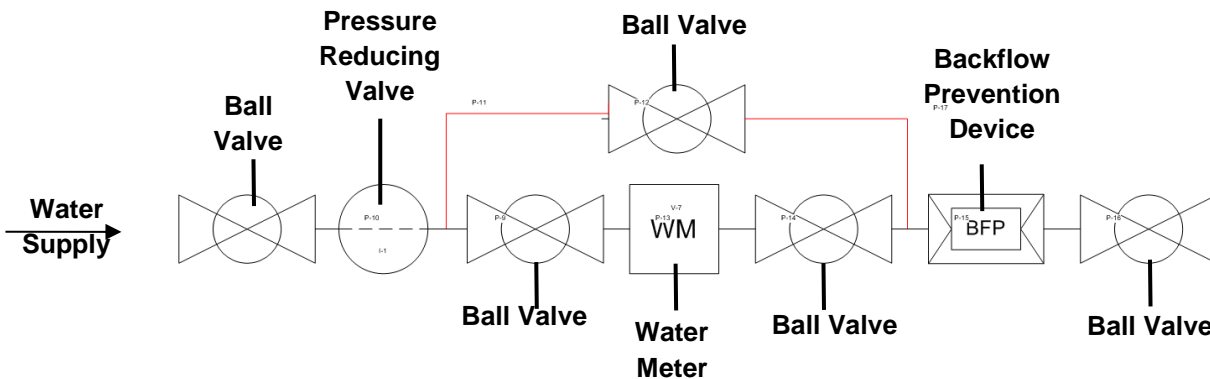


Approved Meter Assembly Diagram



Approved Meter Bypass Assembly Diagram



All Water Service installations must conform to the current Rules and Regulations. The above diagrams are the current approved metering system assemblies. District notification is required to operate the bypass.

Shut Off Valves: Must be installed prior to the PRV and after the spool/water meter to facilitate future repairs.

Pressure-Reducing Valve (PRV): Shall be installed in all service lines upstream of the water meter, ensuring that the water meter and the building plumbing system, including any fire sprinkler system, are protected from fluctuating water main pressures. The pressure setting of the PRV shall not exceed 100 psi for domestic systems and 200 psi for fire sprinkler systems, without written permission from the District.

Water Meter: All services are required to have a Sensus water meter with Electronic Communication Register (ECR) and touch-read pad. Meter installations shall be no higher than three (3) feet above and no lower than six (6) inches above the floor level in a horizontal position. If the meter is currently located in a crawl space, the meter shall be located within three (3') feet of the access entry.

Backflow Prevention Device: Approved backflow prevention assemblies that provide containment shall be installed on all new service connections, and shall be located downstream from the meter, prior to any other connection and in a horizontal position. Single Check Valves are not considered backflow prevention assemblies and shall not be permitted within the service area of the District.