

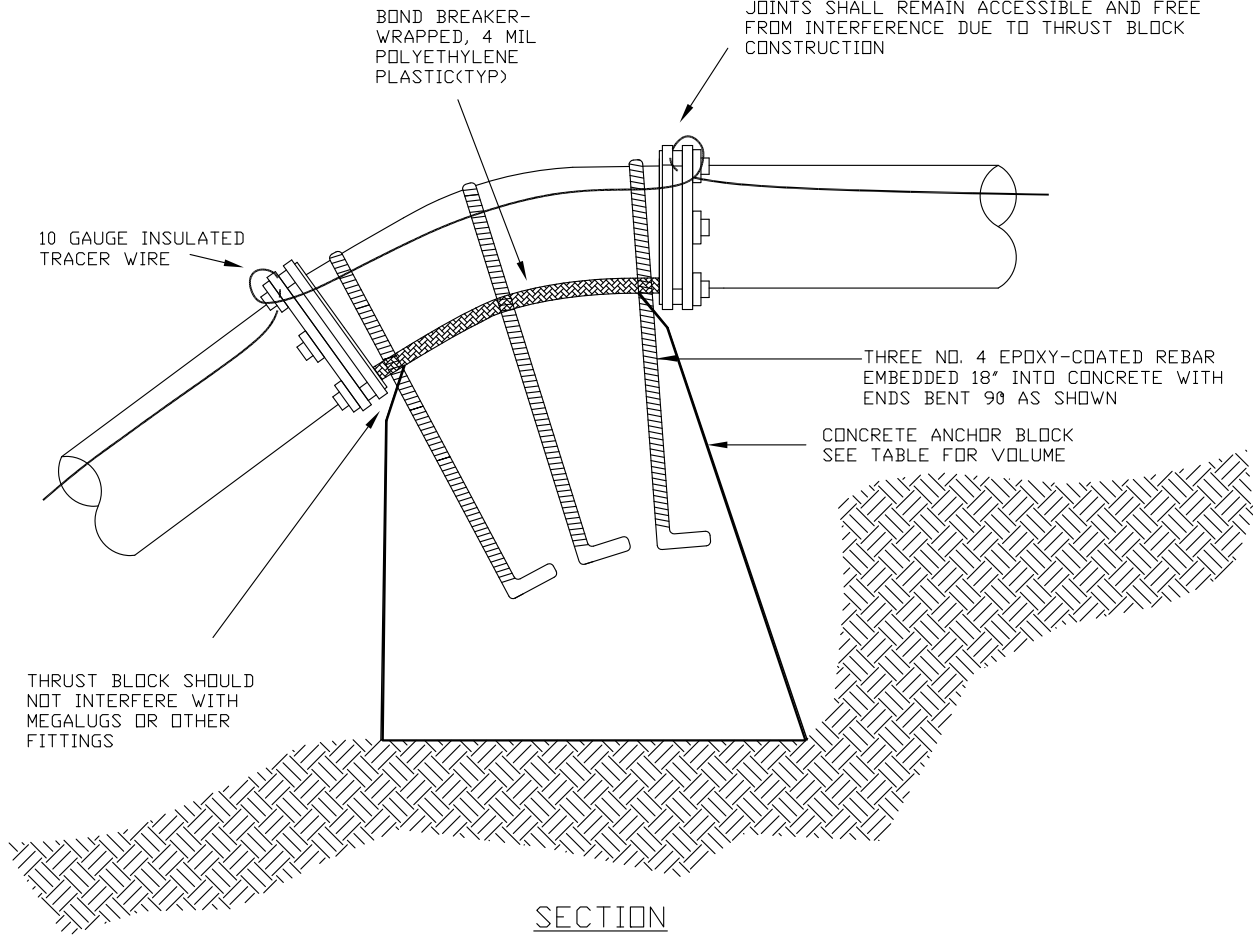
MINIMUM CUBIC YARDS OF CONCRETE

SIZE OF PIPE	BENDS			
	11-1/4°	22-1/2°	45°	90°
4"	0.2	0.4	1.3	N/A
6"	0.2	0.5	1.8	N/A
8"	0.2	0.5	1.8	N/A
10"	0.2	0.8	2.7	N/A
12"	0.3	1.0	3.8	N/A

NA = NOT ALLOWED

NOTE: PIPE LARGER THAN 12" TO BE SPECIFICALLY DESIGNED BY ENGINEER. FORMS SHALL BE 3/8" PLYWOOD

USE MEGALUG JOINT RESTRAINT DEVICES OR SIMILAR UPON PRIOR DISTRICT APPROVAL - POLY-WRAPPED PIPE TO SERVE AS BOND BREAKER (NOT TO INTERFERE WITH RESTRAINED JOINTS) ALL SURFACES OF THE RESTRAINED JOINTS SHALL REMAIN ACCESSIBLE AND FREE FROM INTERFERENCE DUE TO THRUST BLOCK CONSTRUCTION



EAGLE RIVER WATER & SANITATION DISTRICT

VERTICAL THRUST BLOCK

SCALE: NONE

DATE: 01-01-09

LAST REVISED: 12/31/00

APPROVED FOR YEAR 2009

W-18