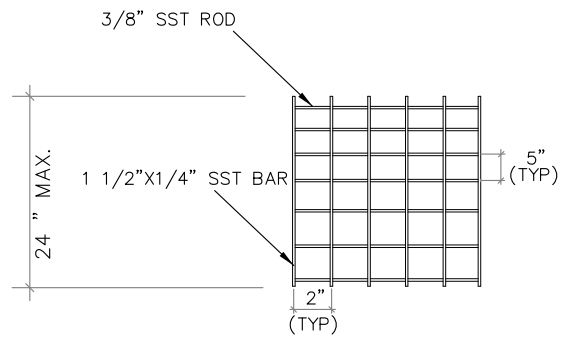
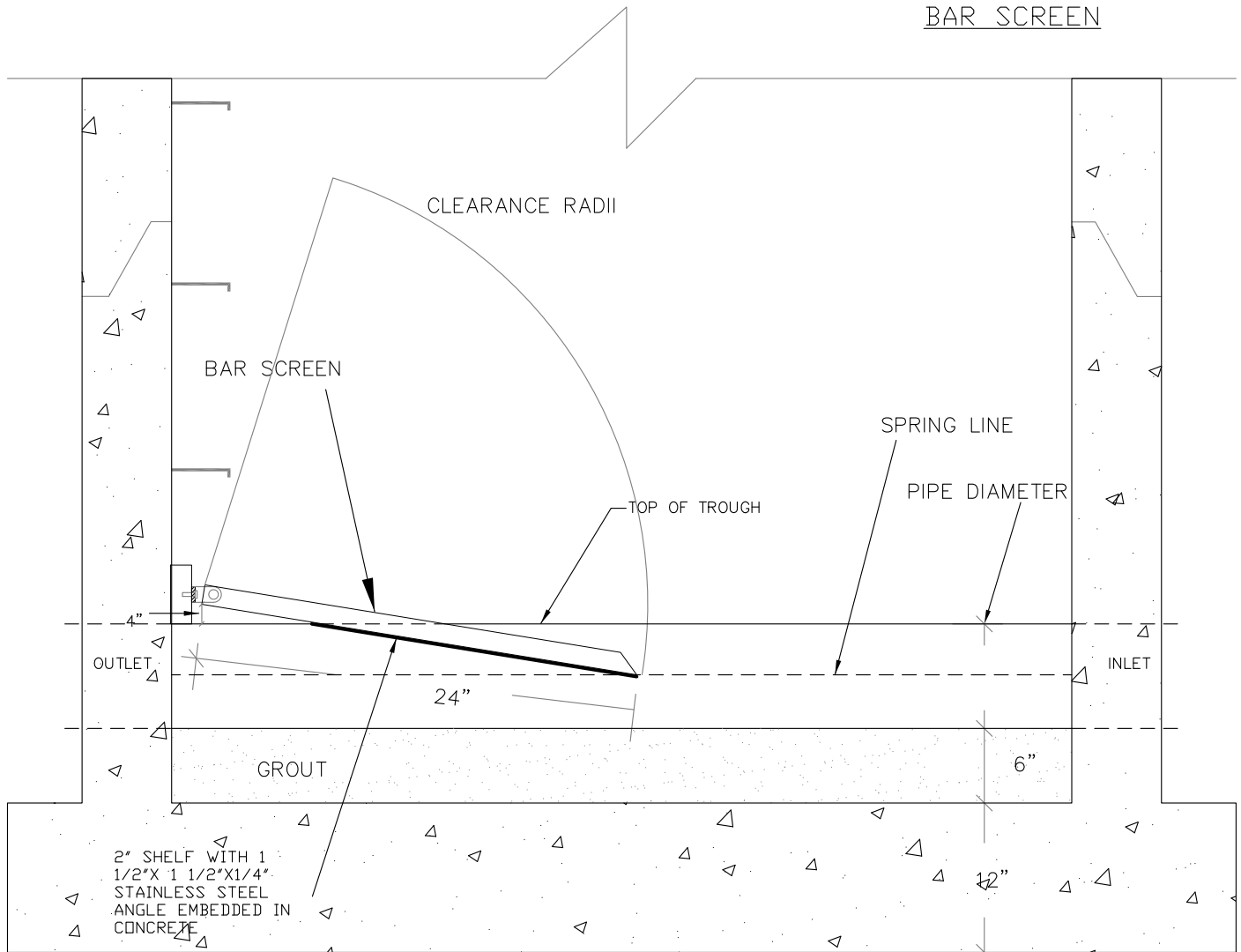


HINGE BRACKET




BAR SCREEN



SECTION B

GENERAL NOTES

1. ALLOW CLEARANCE FOR BAR SCREEN TO SWING UP FOR CLEANING.
2. CONCRETE BENCH FROM INLET TO OUTLET TO BE EQUAL TO PIPE DIAMETER. FORM A BENCH TO SLOPE UP AT 5% TO WALLS OF MANHOLE AS REQUIRED FOR A STANDARD MANHOLE.
3. FORM A 2" "SUB BENCH" ON EITHER SIDE OF CHANNEL AND FOLLOW SAME SLOPE AS BAR SCREEN. IMBED 2X2X1/4" ANGLES ALONG THIS BENCH FOR REST.
4. BAR SCREEN TO BE 24" LONG AND THE WIDTH IS TO BE (DIAMETER OF PIPE + 4"). 1 1/2" X 1/4" STOCK SHALL FORM THE LONG AXIS OF THE SCREEN AND 3/8" ROD SHALL FORM THE BARS.

 EAGLE RIVER WATER & SANITATION DISTRICT	
<b>TYPICAL BAR SCREEN MANHOLE DETAIL</b>	
SCALE: NONE	DATE: 1-1-09
REVISIONS: 12-31-00	
APPROVED: FOR YEAR 2009	S-05